

# Maintaining the Rage for Australia's Built Environment: Life Beyond the CRC for Construction Innovation

CRC Association Annual Conference 2011 - Keeping Ahead of the Curve  
From Research to Revenue Leadership Forum  
Brisbane, 17 May 2011


**Maintaining the Rage for  
Australia's Built Environment:  
Life Beyond the CRC**

Dr Keith Hampson, CEO  
Sustainable Built Environment  
National Research Centre (SBEnrc)



## Presentation Structure

1. A Potted History of our SBEnrc
2. The Survival Pathway
3. Some Concluding Thoughts ...



2

## Growth of Collaborative Research through Australia's SBEnrc

QUT/CSIRO Construction Research Alliance




1996  
↓  
2001  
↓  
2009  
↓  
2010  
↓  
2012  
↓



3

## QUT/CSIRO Construction Research Alliance (1996-2000)


- First direct engagement of CSIRO BE research in Queensland
- Leveraged CSIRO global research with QUT's regional strength
- Developed early productivity, digital modelling and integrated sustainability and procurement analysis
- Reviewed Australia's first building project alliance
- Initiated valuable partnerships with industry, government and research partners nationally and internationally



4


## CRC for Construction Innovation 2001 - 2009

- A\$70M in cash and in-kind over 8½ years
- Industry, government and research partners
  - 28 partners; 450 people involved = 65 EFTS
- Headquartered at QUT
- Only national centre in Australia focusing on the building and infrastructure supply chain
- Key industry outcomes in innovation, productivity, digital modelling, safety and dispute resolution



## Sustainable Built Environment National Research Centre 2010 - 2012

- > A nation-wide collaborative research centre
- > Industry, government and research partners
- > Applied research and industry outreach across 3 integrated themes



6

# Maintaining the Rage for Australia's Built Environment: Life Beyond the CRC for Construction Innovation

## Program Leaders



Peter  
Newman  
Curtin



Russell  
Kenley  
Swinburne



Robin  
Drogemuller  
QUT

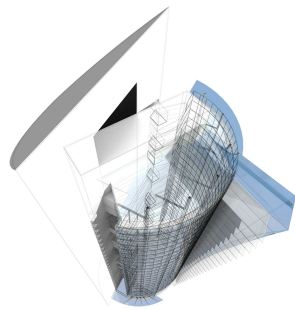


## Our Mission

To be a world-class research and knowledge broker in sustainable infrastructure and building design, construction and management

8

## The Survival Pathway



9



## What are the eggs?

- **Courage** ...
  - Lead the agenda
  - ... establish and refresh the vision
- **Collaboration** ...
  - People ... relationships
  - Organisations ... value the investment
- **Conviction** ...
  - Must have team of believers
  - Long term game ...

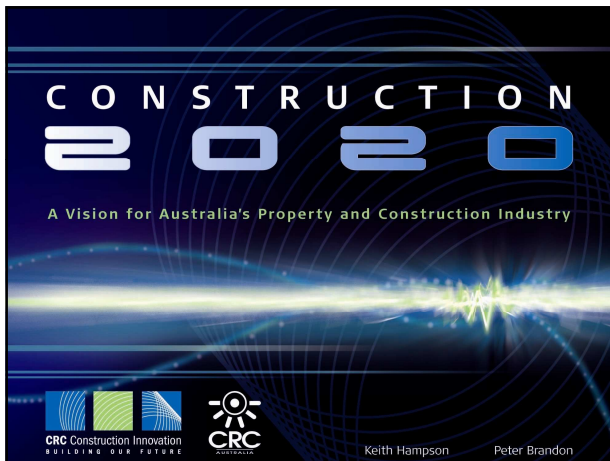
11



Courage

Lead the agenda

# Maintaining the Rage for Australia's Built Environment: Life Beyond the CRC for Construction Innovation

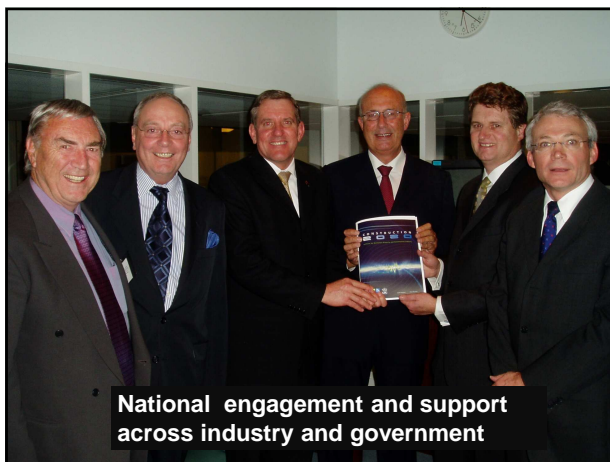


## Construction 2020 Visions

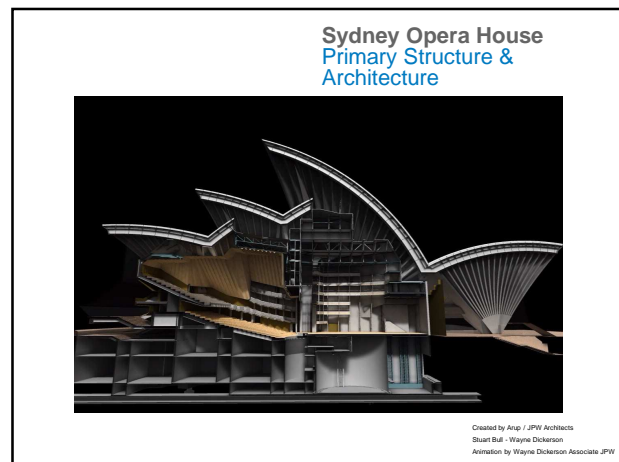
1. Environmentally sustainable construction
2. Meeting client needs
3. Improved business environment
4. Welfare and improvement of the labour force
5. Information and communication technologies for construction
6. Virtual prototyping for design, manufacture and operation
7. Off-site manufacture
8. Improved process of manufacture of constructed products



14



National engagement and support  
across industry and government



Sydney Opera House  
Primary Structure &  
Architecture

Created by Ang / JPW Architects  
Stuart Bull - Wayne Dickerson  
Animation by Wayne Dickerson Associate JPW



National and international industry awards:  
Consult Australia ... Project of the Year  
For Sydney Opera House digital modelling



Take the lead in translating  
research into industry and  
government speak ..

Building Research, Innovation, Technology and Environment

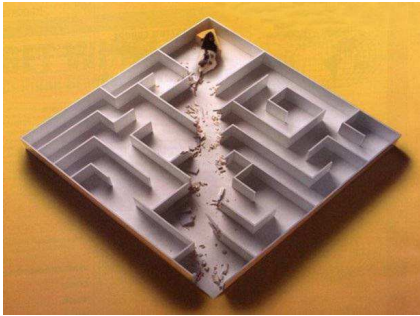
## 4



# Maintaining the Rage for Australia's Built Environment: Life Beyond the CRC for Construction Innovation



## ***Maintaining the Rage for Australia's Built Environment: Life Beyond the CRC for Construction Innovation***



31



### **Some Concluding Thoughts ...**

- Courage ...
- Collaboration ...
- Conviction ...



***The bend in the road is not the end of the  
road unless you refuse to take the turn.***

35

***Good luck ... !***

**[www.sbenrc.com.au](http://www.sbenrc.com.au)**

