



CRC for
Water Sensitive Cities

Asian Journeys

Professor Tony Wong
Chief Executive



An Australian Government Initiative





National Urban Water Policies for Cities of the Future

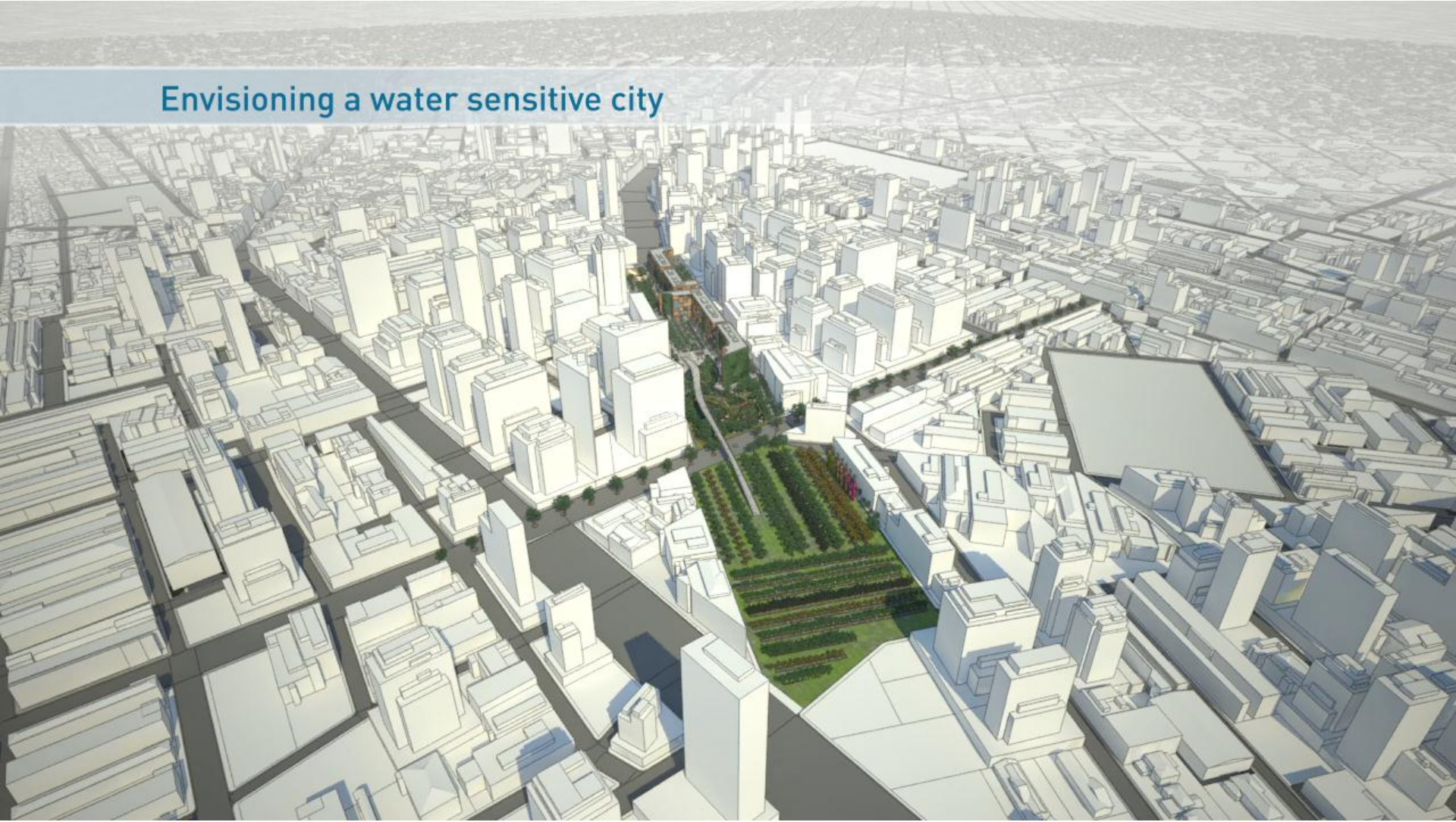
The Water Sensitive City requires the transformation of urban water systems from a focus on water supply and wastewater disposal (the 'taps and toilets' water utilities) to more complex, flexible systems that:-


- ✦ integrate various sources of water;
- ✦ operate through a combination of centralised and decentralised systems;
- ✦ deliver a wider range of services to communities (e.g. ecosystem services, urban heat mitigation); and
- ✦ integrate into urban design.



CRC for
Water Sensitive Cities

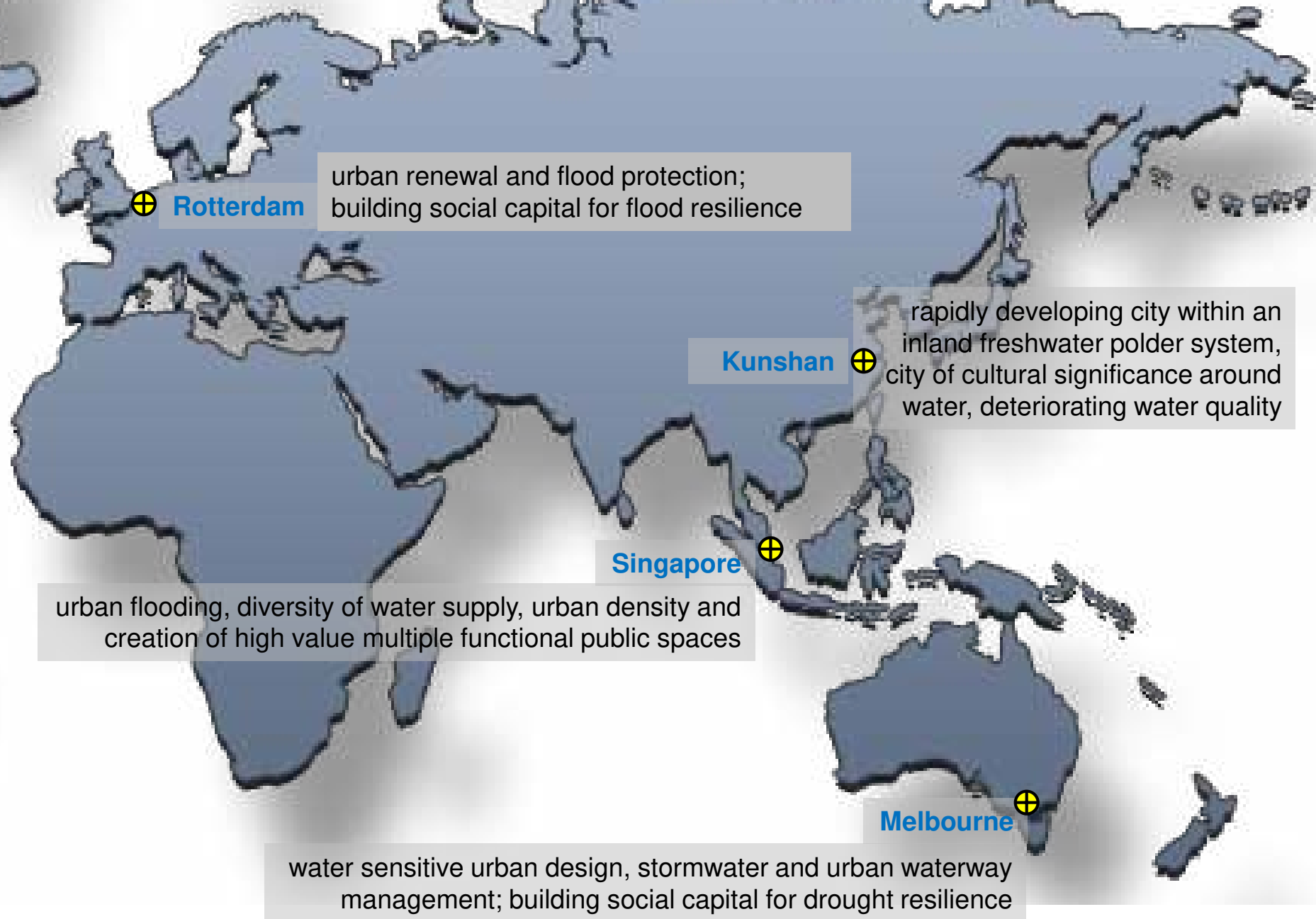
Envisioning a water sensitive city



An aerial photograph of a city, likely Melbourne, Australia. The image shows a dense urban area with numerous skyscrapers and buildings. A large river, the Yarra River, flows through the city, and a large stadium, the Melbourne Cricket Ground, is visible on the right side. The text is overlaid on the right side of the image.

The output of our CRC will guide capital investments of more than \$100 Billion by the Australian water sector and more than \$550 Billion of private sector investment in urban development over the next 15 years.

The value proposition

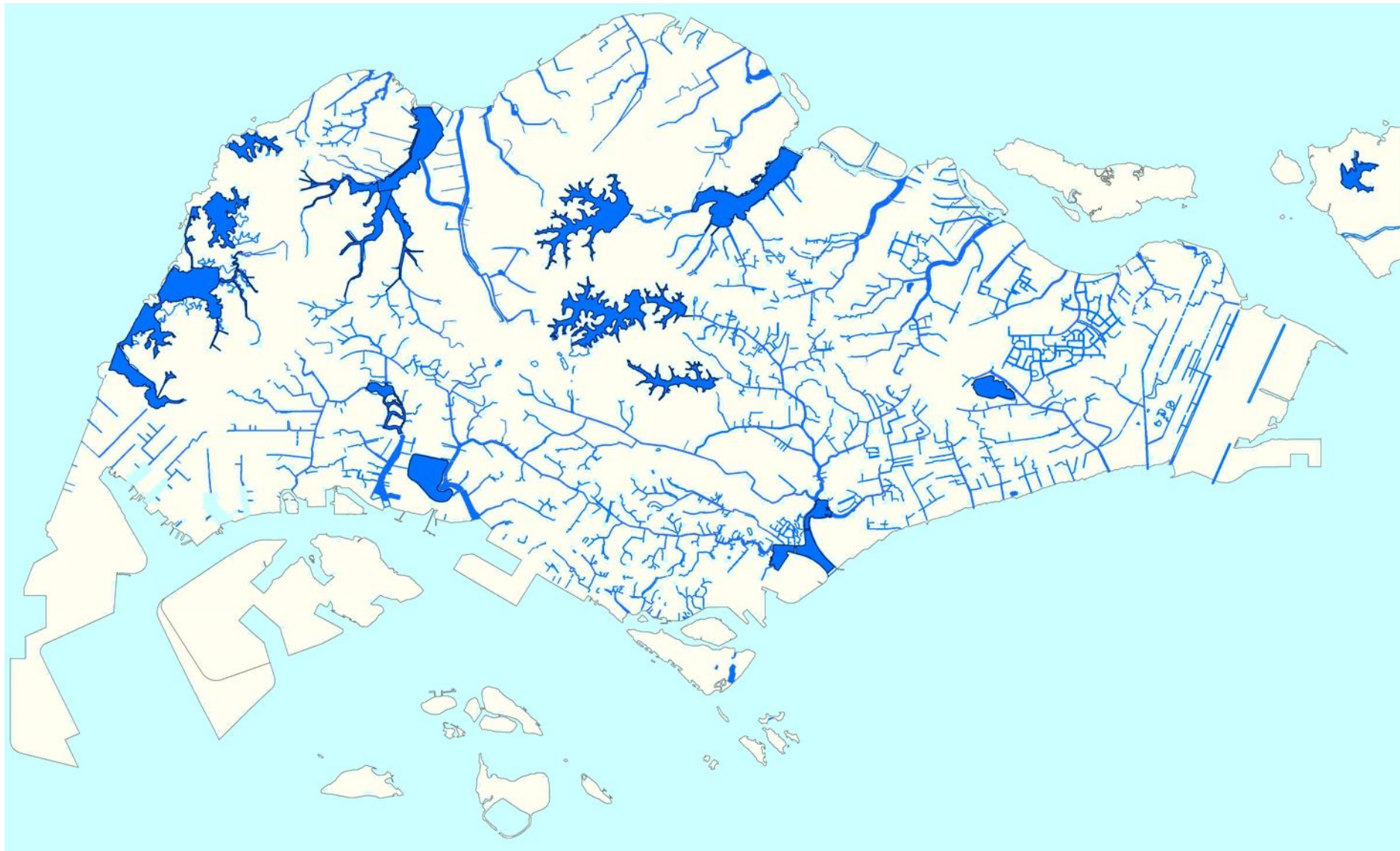


4 Innovation Incubator Cities

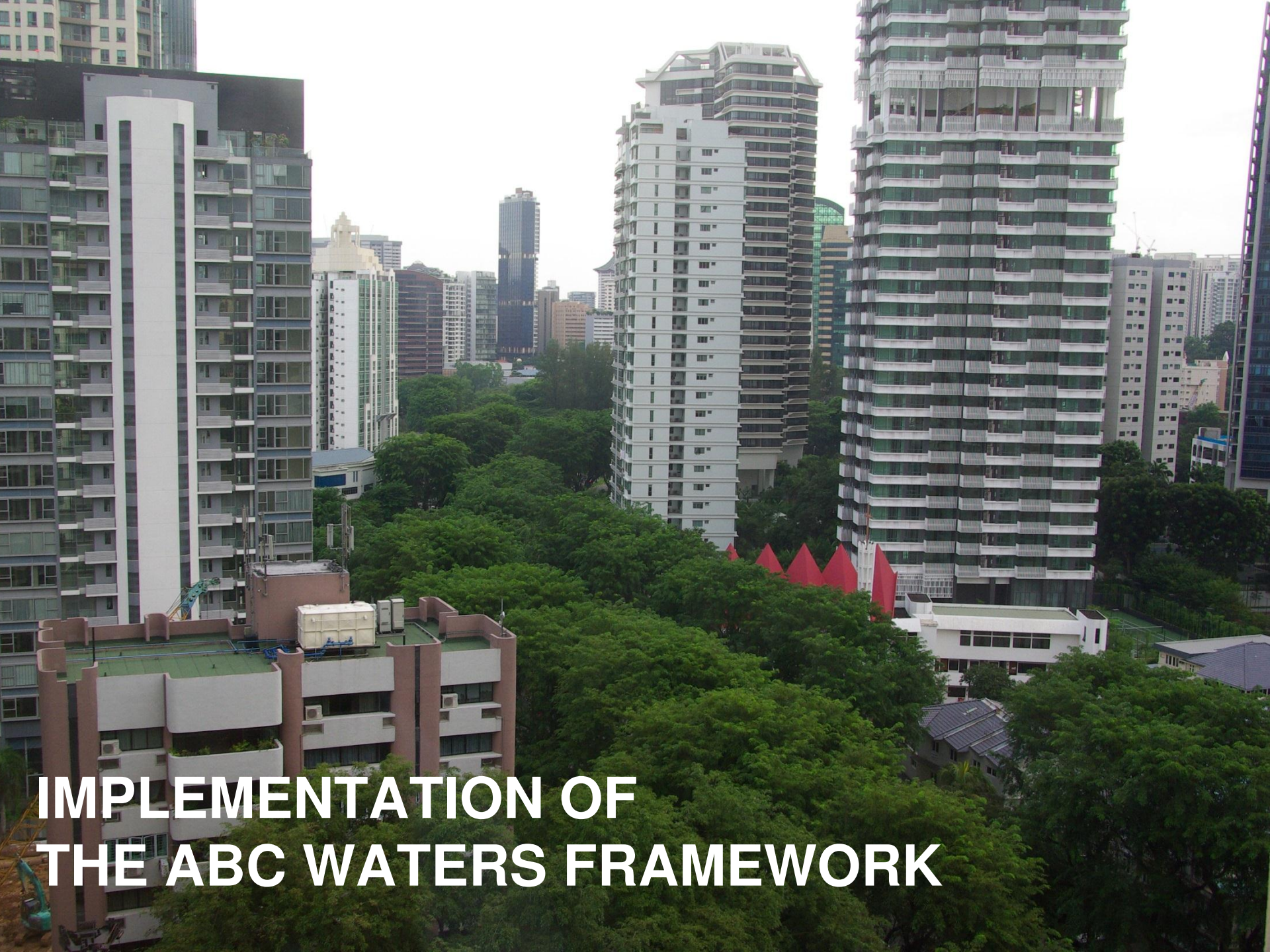
© CRC for Water Sensitive Cities 2012



CRC for
Water Sensitive Cities



CRC for
Water Sensitive Cities



IMPLEMENTATION OF THE ABC WATERS FRAMEWORK

Singapore launches its ABC Water Professional Certification

Published on: 17 June 2013

Some two weeks ago I spoke at the launch of Singapore's ABC Waters Professional Registry and the new Urban Drainage Handbook [<http://www.pub.gov.sg/abcwaters/abcwatersprofessional/Pages/default.aspx>]. Singapore's ABC Waters Programme is its local brand of water sensitive urban design and I have been very fortunate to be involved in Singapore's rapid march towards becoming a water sensitive city. The Public Utilities Board of Singapore (PUB) won an award for its ABC Waters Programme at the Global Water Awards 2013 at the Global Water Summit in Seville, Spain [<http://www.channelnewsasia.com/news/singapore/pub-wins-global-award-for-abc-waters-pro/649318.html>] and is congratulated in being a key bridging organisation in creating a whole-of-government approach to integrated urban water management. PUB is one of the CRC for Water Sensitive Cities key overseas participant organisation.

Since the introduction of their ABC (Active, Beautiful and Clean) Waters Program in 2006, there have been many parallel initiatives in Singapore aimed at 'Institutionalising' WSUD. Capacity building of professionals in Singapore involved in water sensitive urban design is an integral part of the number of parallel initiatives adopted in Singapore. Training courses have been developed and professionals from the engineering, architectural and landscape architectural sectors have been steadily acquiring knowledge and design skills. This was in preparation for the revision of the Code of Practice on Surface Water Drainage in Singapore which now requires ABC Waters features to be included in drainage schemes in development larger than 0.2 Ha. In line with the revisions made, the design, overseeing of the construction, and development of a maintenance plan for the ABC Waters design features will need to be undertaken and endorsed by an ABC Waters Professional – the registry of which was launched some two weeks ago. The development and accreditation of professionals with formal training



City of Kunshan to be China's first CRC Incubator City for Water Sensitive Design and Technology

Published on: 21 January 2014

On Friday 17 January in Kunshan, China, a three-party Memorandum of Understanding (MoU) between the CRC for Water Sensitive Cities (CRC), the Kunshan City-construction Investment and Development Company (KCID) and the Planning Bureau of the City of Kunshan was signed. The MoU represents a combined commitment by the two Kunshan City agencies for city planning and city construction to "extensively use their future projects as incubators of new planning, design concepts and new technologies that are generated out of the CRC and thus providing the opportunity to test research concepts and findings at a city-scale".



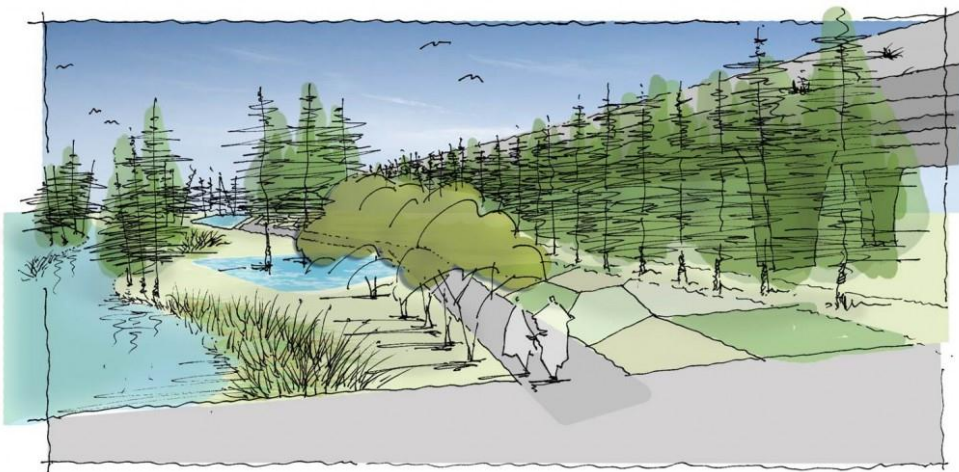
CRC for
Water Sensitive Cities

Creating an urban mosaic in the City of Kunshan

Published on: 16 March 2014

The CRC for Water Sensitive Cities (CRCWSC) held its first incubator workshop with the City of Kunshan, the CRCWSC's first incubator city in China, between 8-11 March 2014.

During the 4-day intensive workshop, the CRCWSC team inspected key sites and developed a conceptual city-wide open space strategy that aims to provide the city with ecosystem services by improving water quality, enhancing landscape connectivity, creating biodiversity, introducing food production into the landscape, and influencing the urban microclimate. The strategy addresses current and emerging issues in the City of Kunshan that are typical of many Chinese cities. These issues are associated with the degrading ecological health and biodiversity of urban open spaces and waterways, emerging criticality in the progressive loss of arable land, the progressive cultural disconnect of local food production in Chinese communities, and increasing vulnerability to floods and urban heat.



Summary

- ❑ CRC for Water Sensitive Cities engaging Asia through research collaboration and consulting projects focused on delivering water sensitive cities.
- ❑ There is a huge appetite in Asia for innovation directed at urban water and city development.
- ❑ Issues like urbanisation, economic growth, and the growth of the middle class, are challenging governments in Asia to consider innovative solutions.
- ❑ The Asian market is sophisticated, knowledgeable and discerning, and it has access to world experts – we are in competition with the best in the world.
- ❑ It is essential to clearly articulate a point of difference in our offerings, and to identify the most effective and profitable engagement pathways.