

Cancer Guidelines Wiki

**A wiki platform to develop, publish and
continuously update
cancer treatment guidelines**

research



prevention



support

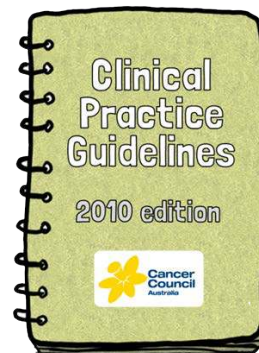


Presenter: Jutta von Dincklage

What are clinical practice guidelines?

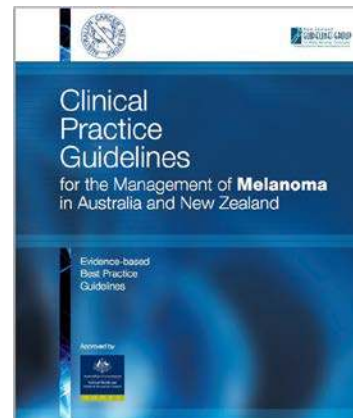
- Recommendations on the prevention, diagnosis treatment of cancer
- Content is based on a systematic review of clinical evidence - the main source for evidence-based care.

Until now, these guidelines have taken the form of printed documents.

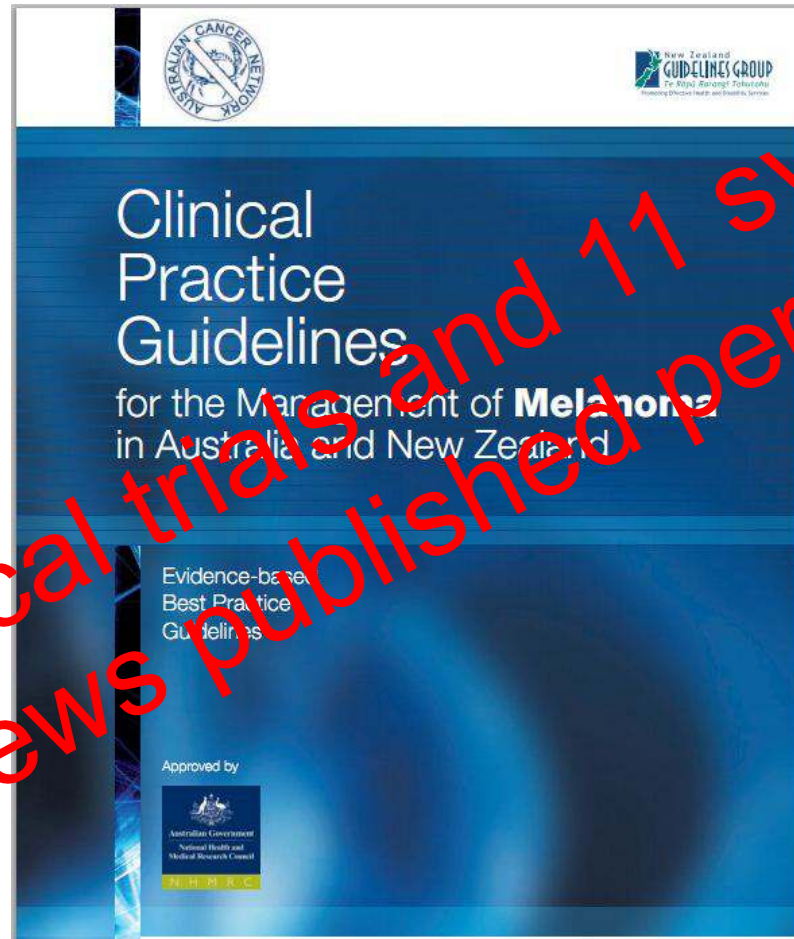


Problems of written guidelines

- Out of date before ink dries because of new evidence constantly being published
- Searching the literature is expensive and time consuming
- Wide stakeholder consultation is important but adds to the delay



Research output

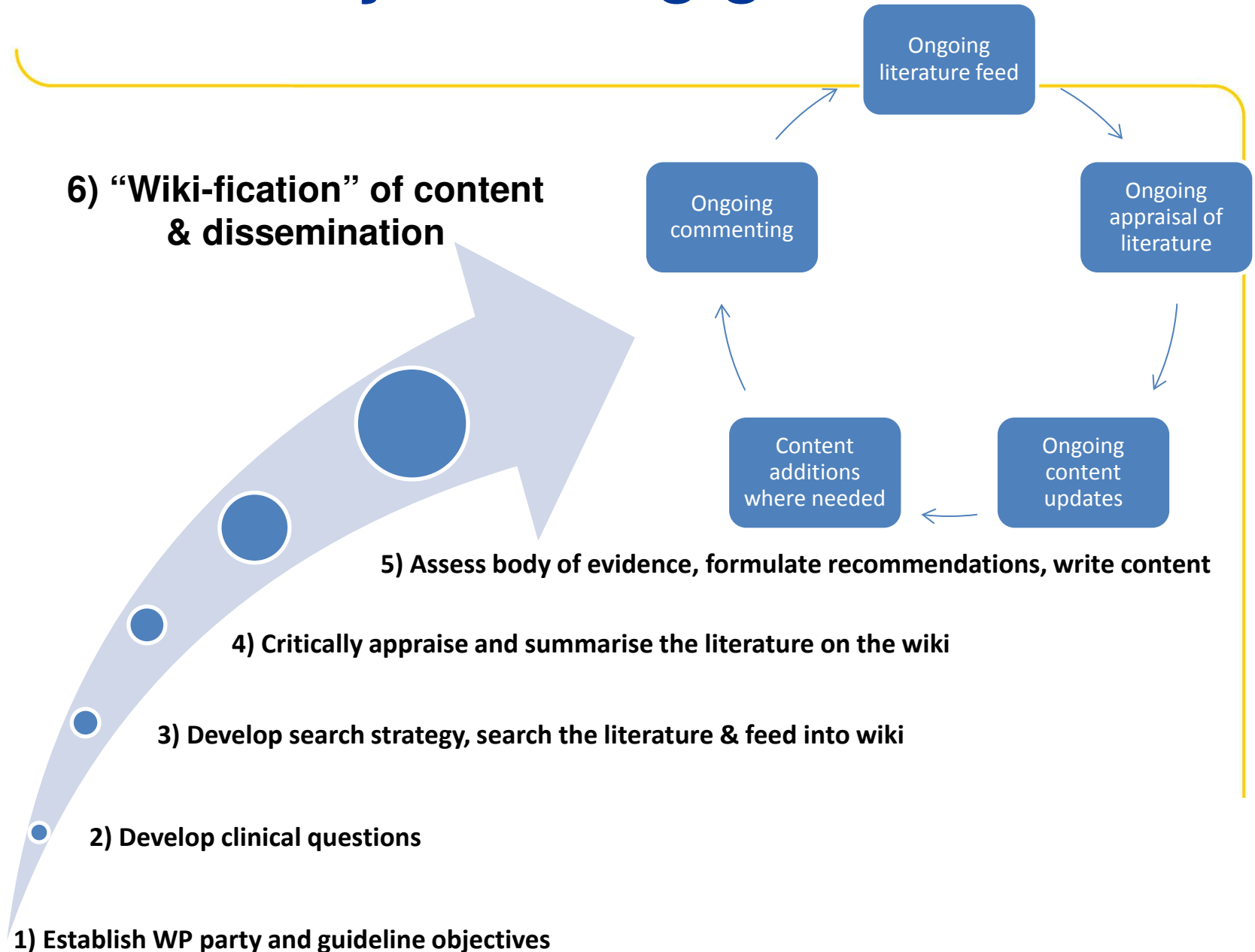


75 clinical trials and 11 systematic reviews published per day!!!!!!

A wiki for Cancer Guidelines



The wiki way of doing guidelines



A wiki guideline

Clinical practice guidelines for the treatment and management of endometrial cancer

Management of apparent early stage low and high risk endometrial cancer

Contents

Foreword

Summary of recommendations

(Printable version of draft summary of recommendations [PDF](#))

Pre-operative investigations

1. What is the role of preoperative imaging for low and high risk apparent early stage endometrial cancer?

Surgery

1. What is the evidence based surgical approach for hysterectomy in low and high risk apparent early stage endometrial cancer?
2. What is the evidence based surgical approach for bilateral salpingo-oophorectomy in premenopausal women with low and high risk apparent early stage endometrial cancer?
3. What is the evidence based surgical approach for lymphadenectomy in low and high risk apparent early stage endometrial cancer?
4. What is the role of intra-operative assessment of the uterus in low and high risk apparent early stage endometrial cancer?

Adjuvant therapy

1. After hysterectomy, what is the role of radiotherapy (external beam, brachytherapy) in the management of early stage high risk endometrial cancer?
2. After hysterectomy, what is the role of chemotherapy (concurrent/concomitant, sequential, sandwich, chemoradiation) in the management of early stage high risk endometrial cancer?

Multidisciplinary care

1. Is there a benefit to multidisciplinary team management and histopathological review of curettages or biopsy prior to treatment in low and high risk early stage endometrial cancer?

Appendices

Guideline development process

Working party members and contributors

Public consultation

Clinical question

Clinical question: What is the optimal chemotherapy regimen and duration of therapy in extensive stage small cell lung cancer in the first line setting?

Database

PubMed

Search Command

```
(small cell lung carcinoma[mh] OR SCLC[tw] OR (carcinoma, small cell[mh] AND (lung neoplasms[mh:noexp] OR bronchial neoplasms[mh:noexp] OR carcinoma, bronchogenic[mh:noexp])) AND humans[sb]) OR (SCLC[tiab] OR (small cell lung cancer*[tiab] OR small cell lung carcinoma*[tiab] OR (small cell[tiab] AND (lung*[tiab] OR pulmonary[tiab] OR bronchus[tiab] OR bronchogenic[tiab] OR bronchial[tiab])) AND (cancer*[tiab] OR carcinoma*[tiab]))) NOT non small[tiab]) NOT medline[sb]) AND (extensive[tiab] OR ES-SCLC[tiab] OR ESSCLC[tiab] OR ED-SCLC[tiab] OR advanced small cell lung[tiab] OR metastatic small cell lung[tiab]) AND (chemotherap*[tw] OR drug therapy[mh] OR Antineoplastic Combined Chemotherapy Protocols[mh] OR combined modality therapy[mh] OR multimodal*[tw] OR trimodal*[tiab] OR bimodal*[tiab] OR tri-modal*[tiab] OR bi-modal*[tiab] OR first line[tiab] OR time factors[mh] OR duration of therapy[tiab] OR biological Factors/therapeutic use[mh] OR biological therapy[tw] OR Enzyme therapy[mh] OR Enzyme inhibitors[mh] OR inhibitor*[tiab] OR Enzymes[mh] OR Amino Acids, Peptides, and Proteins[mh] OR Biological agent*[tiab] OR biological target*[tiab] OR molecular target*[tiab] OR novel therapy[tiab]) AND (meta-analysis[pt] OR meta-analysis[tiab] OR meta-analyses[tiab] OR systematic* AND review*[tw] OR clinical trial[tw] OR randomized controlled trial[pt] OR random allocation[mh] OR randomized[tiab] OR randomised[tiab] OR guideline[mh] OR clinical practice guideline*[tiab]) AND English[la] AND ("2002"[PDAT] : "3000"[PDAT])
```

Search Type

Automatic update alert

Date

2012-06-12

Number of articles retrieved

4

Number of irrelevant articles

Unknown

Number of relevant articles

Unknown

Pending search results

[edit]

- ✓ X Swiss Group for Clinical Cancer Research, Früh M, Cathomas R, Siano M, Tscherry G, Zippellus A, et al. Carboplatin and Paclitaxel Plus ASA404 as First-Line Chemotherapy for Extensive-Stage Small-Cell Lung Cancer: A Multicenter Single Arm Phase II Trial (SAKK 15/08) Clin Lung Cancer 2012 May 23; [Available at <http://www.ncbi.nlm.nih.gov/pubmed/22633220>]
- ✓ X Spigel DR, Greco FA, Rubin MS, Shipley D, Thompson DS, Lubiner ET, et al. Phase II study of maintenance sunitinib following irinotecan and carboplatin as first-line treatment for patients with extensive-stage small-cell lung cancer Lung Cancer 2012 May 2; [Available at <http://www.ncbi.nlm.nih.gov/pubmed/22560921>]
- ✓ X Young RJ, Tin AW, Brown NJ, Jitlal M, Lee SM, Woll PJ. Analysis of circulating angiogenic biomarkers from patients in two phase III trials in lung cancer of chemotherapy alone or chemotherapy and thalidomide Br J Cancer 2012 Mar 13;106(6):1153-9 [Available at <http://www.ncbi.nlm.nih.gov/pubmed/22353811>]
- ✓ X Swiss Group for Clinical Cancer Research, Früh M, Cathomas R, Siano M, Tscherry G, Zippellus A, et al. Carboplatin and Paclitaxel Plus ASA404 as First-Line Chemotherapy for Extensive-Stage Small-Cell Lung Cancer: A Multicenter Single Arm Phase II Trial (SAKK 15/08) Clin Lung Cancer 2012 May 23; [Available at <http://www.ncbi.nlm.nih.gov/pubmed/22633220>]
- ✓ X Spigel DR, Greco FA, Rubin MS, Shipley D, Thompson DS, Lubiner ET, et al. Phase II study of maintenance sunitinib following irinotecan and carboplatin as first-line treatment for patients with extensive-stage small-cell lung cancer Lung Cancer 2012 May 2; [Available at <http://www.ncbi.nlm.nih.gov/pubmed/22560921>]
- ✓ X Young RJ, Tin AW, Brown NJ, Jitlal M, Lee SM, Woll PJ. Analysis of circulating angiogenic biomarkers from patients in two phase III trials in lung cancer of chemotherapy alone or chemotherapy and thalidomide Br J Cancer 2012 Mar 13;106(6):1153-9 [Available at <http://www.ncbi.nlm.nih.gov/pubmed/22353811>]

The wiki way: Offering transparency

- Each guideline content page lists a series of appendices to provide transparency about recommendation grading and body of evidence
- User can also access **pending evidence** that hasn't yet been incorporated

Appendices



View recommendation
components [↗](#)



View pending
evidence [↗](#)



View body of
evidence [↗](#)



View all
comments



View literature
search [↗](#)

The wiki way: Engaging users

Recommendation	Grade
★ Non-platinum 3G doublet chemotherapy is an effective alternative option for patients unsuitable for platinum-based therapy.	B

 Comments

Submit new evidence


treatment of NSCLC

[History](#) [Move](#) [Protect](#) [Watch](#) [Summarize](#) [Change subject](#)



No mention of Palliative Care in stage 3A/B in the treatment of NSCLC. five year survival rates are 14% and 4% respectively.


152.76.1.244 14:50, 2 May 2012

 [Reply](#) [More](#) ▾



Happy to add a practice point stating that given symptomatology experienced by these patients and their poor survival outcomes, referral to palliative care should be considered.

Margot.lehman 7:15, 22 May 2012

 [Reply](#) [Parent](#) [More](#) ▾



That would be excellent. Thank you

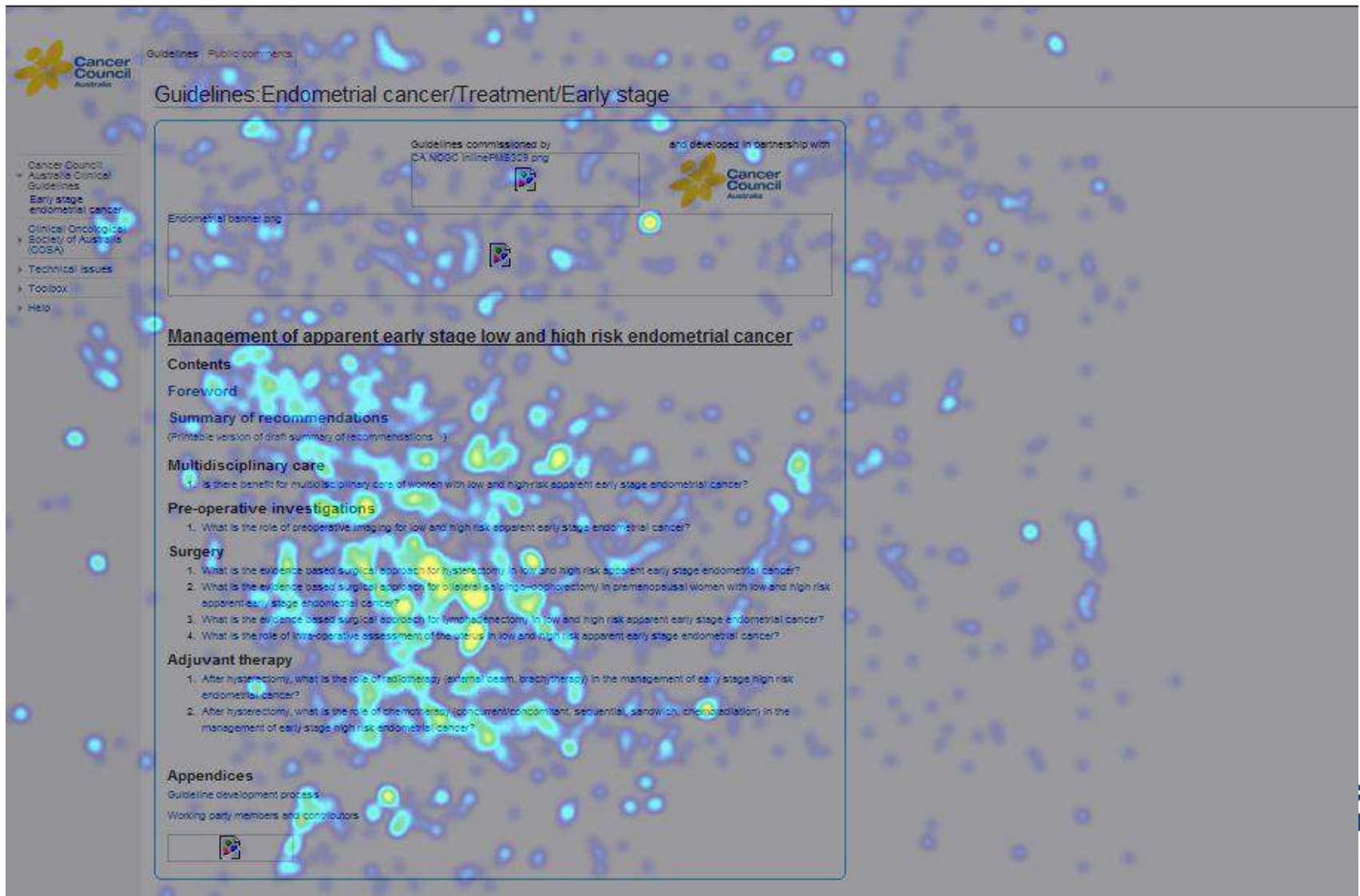
Strutr 10:16, 23 May 2012

 [Reply](#) [Parent](#) [More](#) ▾

Our first wiki guideline

- 22 volunteer authors to answer 67 clinical questions
- Literature search: 26307 results (24238 irrelevant)
- 2035 articles forwarded, 517 further articles added
- 1,215 articles excluded by authors, 828 included
- Internal review: 156 comments in nine weeks
- Public consultation: 1055 visitors (487 visitors through our email campaign = 4.62 pages/visit; 6:30 minutes)
- 38 public comments => 31 content edits

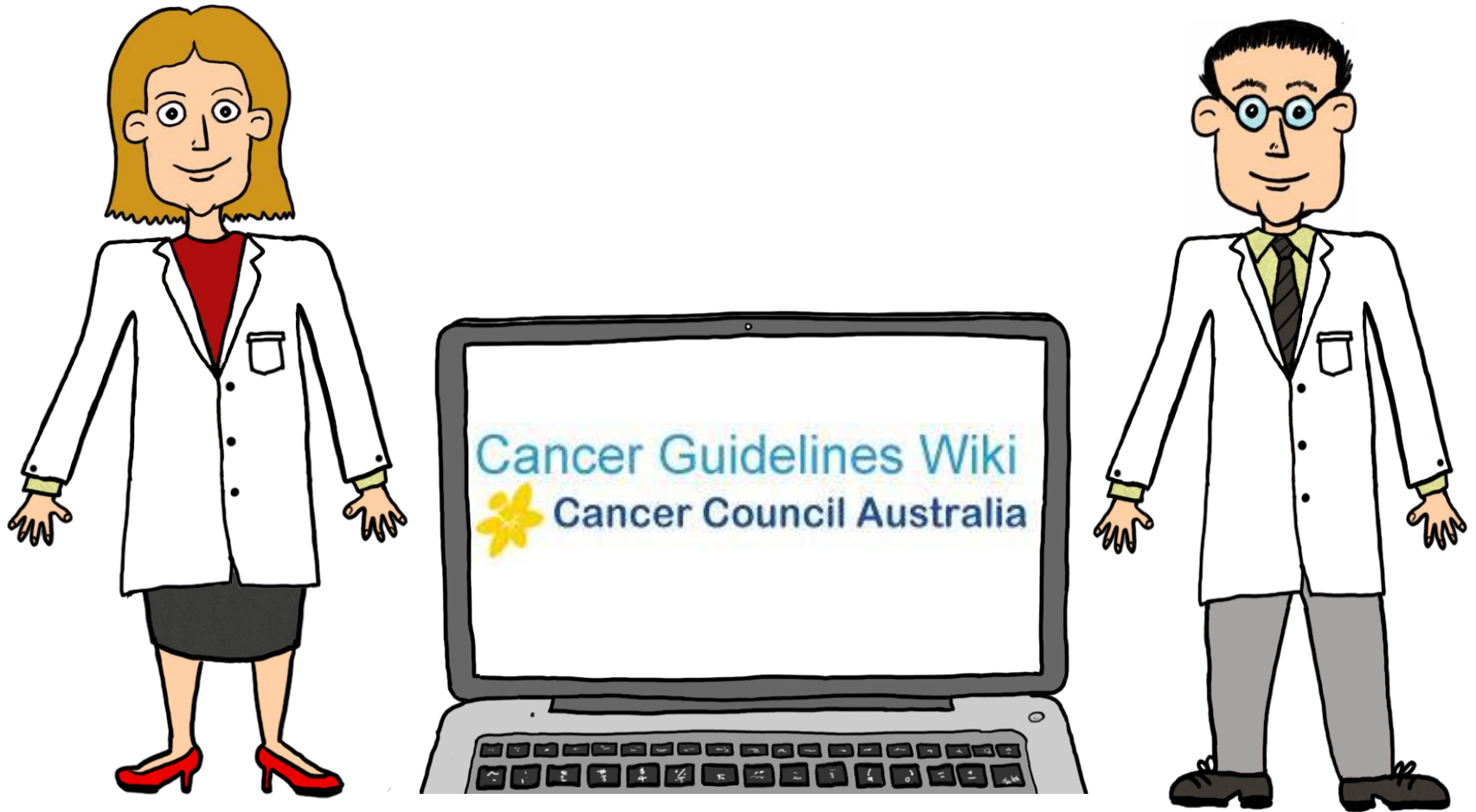
Web analytics: How people navigate the site



Future ahead: Focus on interlinking

- Link to a clinical trials databases so that an investigator could see what practice is, what new papers there are and what trials are ongoing and identify the gaps as to plan the next trial
- Link to detailed treatment guidelines (EviQ)
- Add educational tools (e.g. Q-stream)

The wiki as a tool to facilitate collaboration



Acknowledgements

My team

- Prof Ian Olver, CEO Cancer Council Australia
- Christine Vuletich, Manager - Clinical Guidelines Network
- Laura Holliday, Alisha Dorrigan, Alice Winter-Irving, Project Officers
- Endometrial and lung cancer working party

Technical support

- Andrew Garrett, Lead Developer
- Dr Bob Jansen, IT Consultant

Mediawiki skin

- Redwerks (web design agency)

Presentation doodles

- Gavin Wedell
- Wiki colleagues and friends